



# MONTHLY MEMBERSHIP PROGRESS REPORT

District 24 D

Results as of: 06/30/2018

GMT: CINDY GREGG

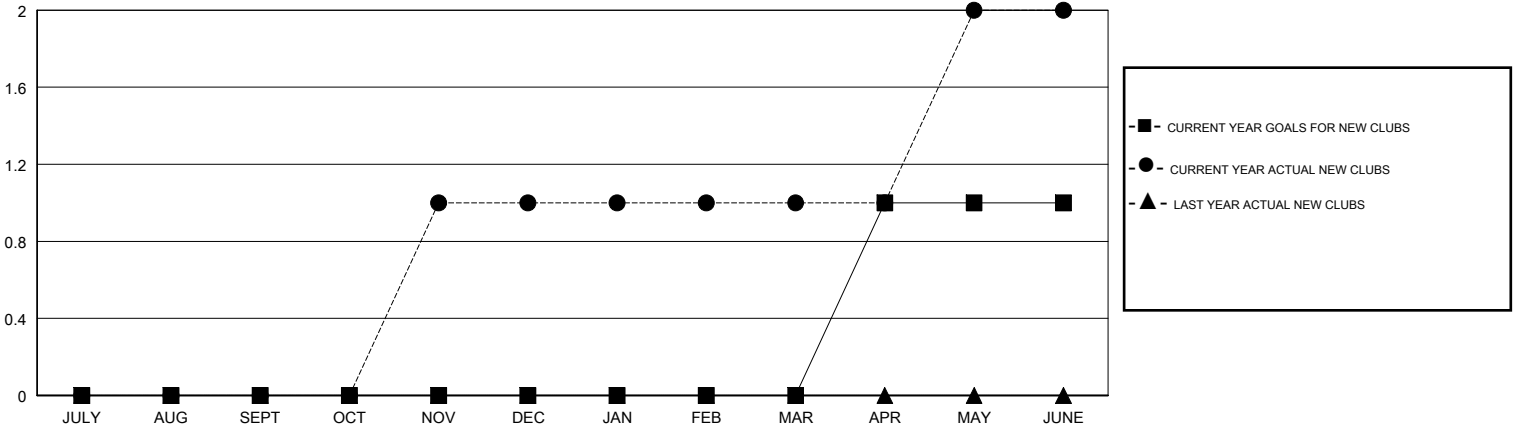
LOCATION VIRGINIA

GMT CA

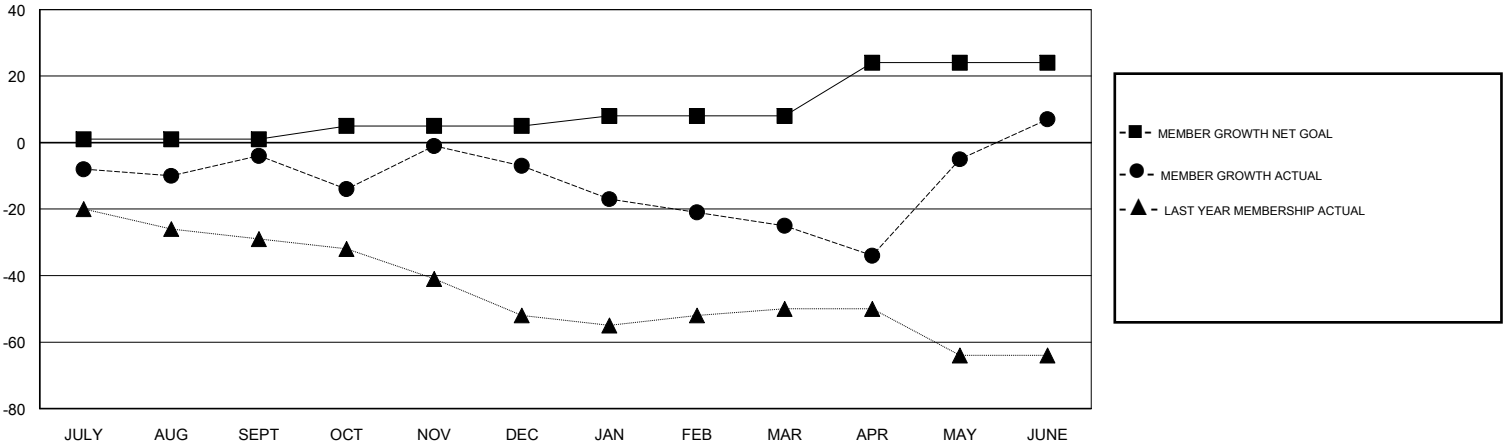
Clubs			
RESULTS FOR 2017-2018			
QUARTER	NEW CLUB GOAL	NEW CLUBS	DROPPED CLUBS
JULY/AUG/SEPT	0	0	0
OCT/NOV/DEC	0	1	0
JAN/FEB/MAR	0	0	0
APR/MAY/JUNE	1	1	0

Members			
RESULTS FOR 2017-2018			
QUARTER	MEMBER GROWTH NET GOAL	MEMBER GROWTH ACTUAL	DROPPED MEMBERS ACTUAL (including transfers)
JULY/AUG/SEPT	1	27	29
OCT/NOV/DEC	4	45	47
JAN/FEB/MAR	3	24	38
APR/MAY/JUNE	16	95	58

GOALS AND ACTUAL NEW CLUBS CUMULATIVE



GOALS AND ACTUAL MEMBERS CUMULATIVE



DROPPED CLUBS: 0	38 CLUBS OF 58 ADDED 1 OR MORE NEW MEMBERS	<u>GENDER DISTRIBUTION</u>	
DROPPED MEMBERS		MALE	900 (63.97%)
DECEASED	29	FEMALE	507 (36.03%)
CLUB CANCELLED	0	Women Percentage Fiscal Year Goal: 35%	
OTHER	142	TOTAL FAMILY UNIT MEMBERS	0
TOTAL	171	FAMILY MEMBERS PAYING HALF DUES	0

[CLICK HERE FOR CUMULATIVE MEMBERSHIP DATA](#)